

DESCRIPTION

This series of AC-DC switching power supplies in a package of 3 x 6 x 1.3 inches are capable of delivering 300 watts of continuous power at 10 CFM forced air cooling or 200 watts at convection cooling. A L-bracket as a mechanical support or cover-and-fan assembly can be added during manufacturing.

FEATURES

- BF Class insulation
- 3 x 6 inch footprint with 1.3 inch low profile
- Meet EN55011/55022 and FCC Class B
- Power Factor 0.98 typical
- OVP, OCP, OTP protection
- Output Inhibit control & Power Failed indication
- Output voltage sense input
- Standby voltage 5Vdc up to 2A
- Fan driver 12Vdc
- Optional form factor PCB, L-bracket & Enclosed selection

WATTAGE

Wattage: 300W

DIMENSION

Dimension: 152.4mm(L) x 76.2mm(W) x 33.1mm(H)

INPUT SPECIFICATION

Input Range: 90-264 Vac
Input Frequency: 47-63 Hz
Input Current: 4A (rms) for 115 VAC, 2A (rms) for 230 VAC
Leakage Current: 220 µA max. @ 264 VAC, 63 Hz

SAFETY STANDARD APPROVAL



ENVIRONMENTAL SPECIFICATION

TEMP. Range: Operating Temperature: 0°C to +50°C
 Storage Temperature: -20°C to +85°C

Humidity: Operating : 10% to 90% RH, Non-condensing
 Storage : 5% to 95% RH, Non-condensing

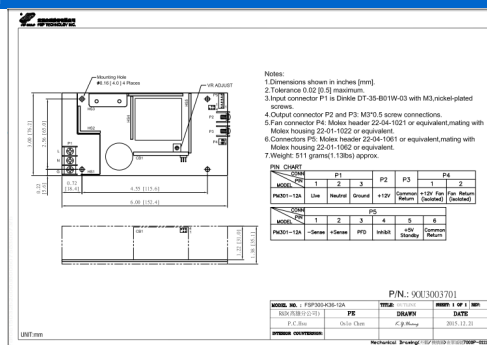
OUTPUT ELECTRICAL

Single Output: 15 V/ 20 A
Second Output: 5V/ 2A
Line Regulation: +/- 1%
Load Regulation: +/- 5%

NOTES

1. Suffix "A" in model numbers denotes PCB constructed form. Change suffix "A" to "B" for L-bracket form, and change suffix "A" to "C" for enclosed form. e.g. FSP300M-K36-15B, FSP300M-K36-15C.
2. 200 W without moving air or 300 W with 10 CFM forced air provided by user.
3. Ripple and noise is maximum peak to peak voltage value measured at output within 20 MHz bandwidth, at rated line voltage and output load ranges, and with a 10 µF tantalum capacitor in parallel with a 0.1 µF ceramic capacitor across the output.

MECHANICAL SPECIFICATION



This content is subject to change, please refer to specification for more detail.
 FSP reserve the right to change the content without prior notice.