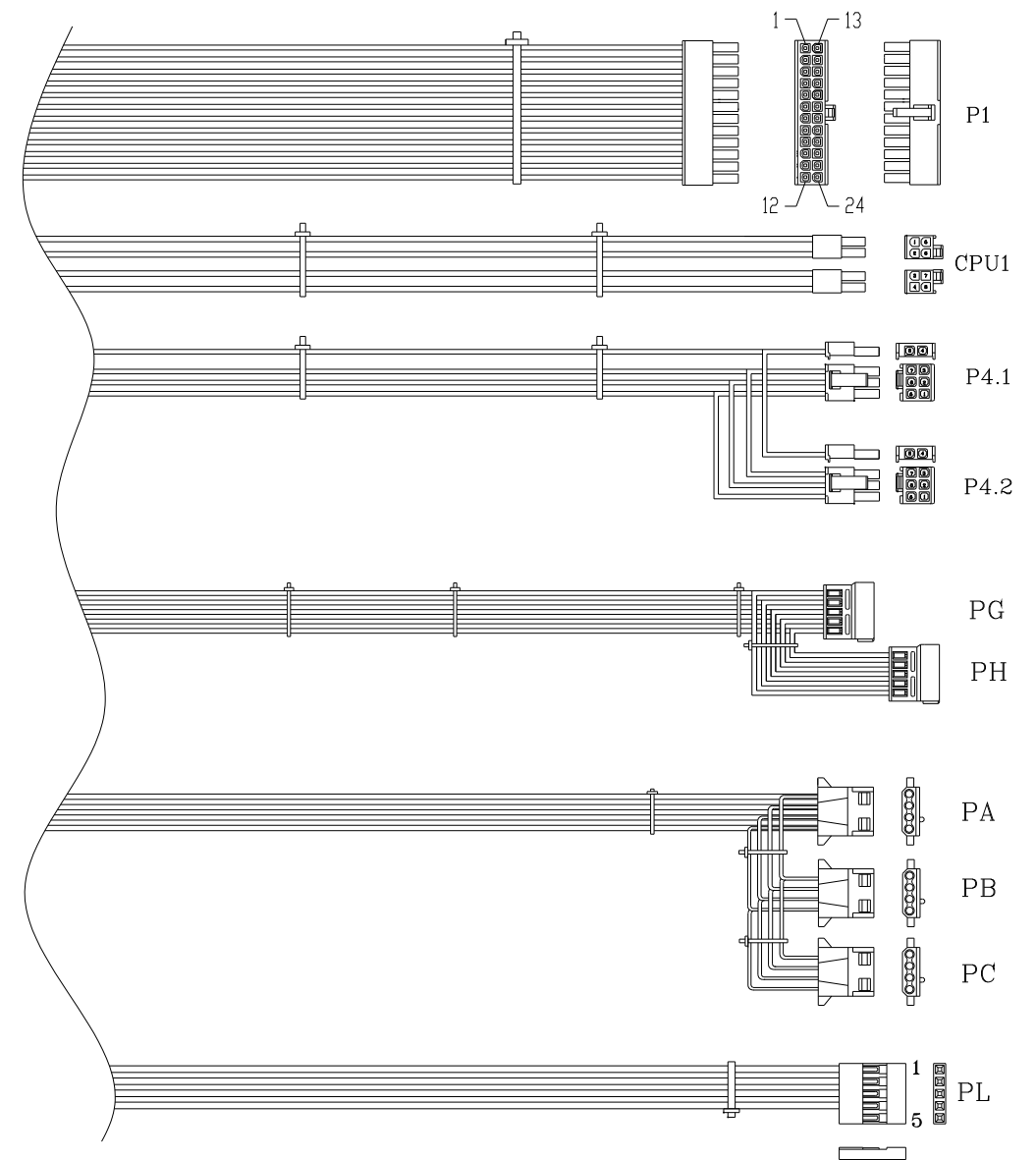
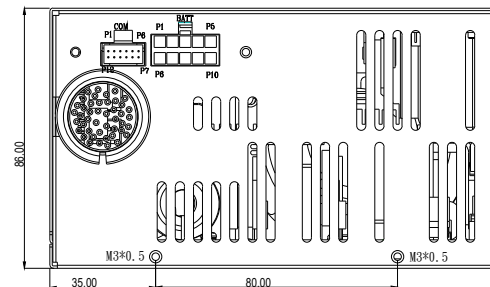
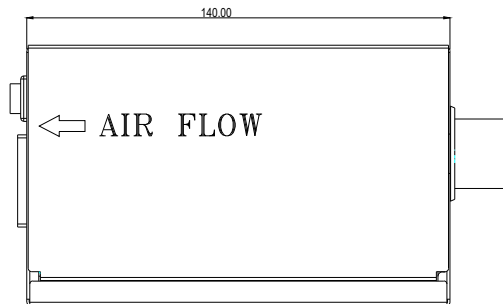
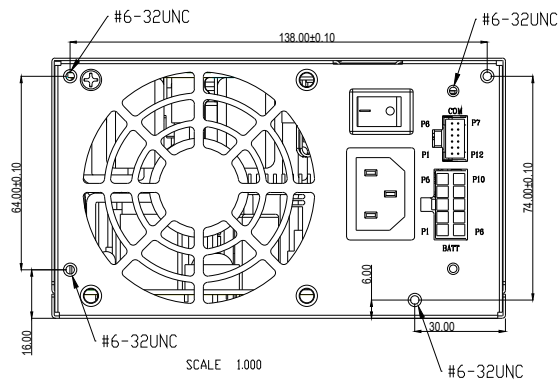
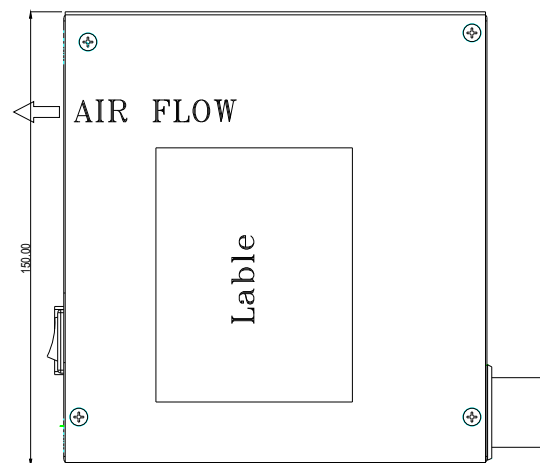
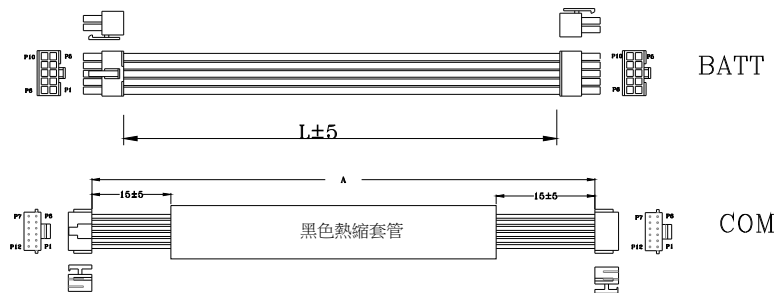


REF. ID.	PIN NO.	SIGNAL	WIRE COLOR	GAUGE	CONNECTOR TYPE	CABLE LENGTH
P1	1	+3.3VDC	ORANGE	18	MOLEX 39-01-2240 or EQUIV.	400±15mm
	2	+3.3VDC	ORANGE	18		
	3	COM	BLACK	18		
	4	+5VDC	RED	18		
	5	COM	BLACK	18		
	6	+5VDC	RED	18		
	7	COM	BLACK	18		
	8	PS-ON	GRAY	22		
	9	+5Vsb	PURPLE	18		
	10	+12V2	YELLOW/BLUE	18		
	11	+12V2	YELLOW/BLUE	18		
	12	+3.3VDC	ORANGE	18		
	13	+3.3VDC	ORANGE	18		
	14	+3.3V sense	BROWN	22		
	15	-12VDC	BLUE	22		
	16	COM	BLACK	18		
	17	PS-ON	GREEN	22		
	18	COM	BLACK	18		
	19	COM	BLACK	18		
	20	COM	BLACK	18		
21	+5VDC	RED	18			
22	+5VDC	RED	18			
23	+5VDC	RED	18			
24	COM	BLACK	18			
CPU1	1	COM	BLACK	18	WST P4-H2002K3 P4-H2002K4 or EQUIV.	400±15mm
	2	COM	BLACK	18		
	3	+12V1	YELLOW	18		
	4	+12V1	YELLOW	18		
	5	COM	BLACK	18		
	6	COM	BLACK	18		
	7	+12V1	YELLOW	18		
	8	+12V1	YELLOW	18		
P4.1	1	+12V2	YELLOW/WHITE	18	WST H2002K21B-B or EQUIV.	500±15mm
	2	+12V2	YELLOW/WHITE	18		
	3	+12V2	YELLOW/WHITE	18		
	4	COM	BLACK	18		
P4.2	1	+12V2	YELLOW/WHITE	18	WST H2002K21B-B or EQUIV.	150±10mm
	2	+12V2	YELLOW/WHITE	18		
	3	+12V2	YELLOW/WHITE	18		
	4	COM	BLACK	18		
PG	1	+3.3VDC	ORANGE	18	MOLEX SD-67582-001 or EQUIV.	400±15mm
	2	COM	BLACK	18		
	3	+5VDC	RED	18		
	4	COM	BLACK	18		
	5	+12V2	YELLOW/BLUE	18		
PH	1	+3.3VDC	ORANGE	18	MOLEX SD-67582-001 or EQUIV.	150±10mm
	2	COM	BLACK	18		
	3	+5VDC	RED	18		
	4	COM	BLACK	18		
	5	+12V2	YELLOW/BLUE	18		
PA	1	+12V2	YELLOW/BLUE	18	AMP I-480424-0 or EQUIV.	400±15mm
	2	COM	BLACK	18		
	3	COM	BLACK	18		
	4	+5VDC	RED	18		
PB	1	+12V2	YELLOW/BLUE	18	AMP I-480424-0 or EQUIV.	150±10mm
	2	COM	BLACK	18		
	3	COM	BLACK	18		
	4	+5VDC	RED	18		
PC	1	+12V2	YELLOW/BLUE	22	AMP I-480424-0 or EQUIV.	150±10mm
	2	COM	BLACK	22		
	3	COM	BLACK	22		
	4	+5VDC	RED	22		
PL	1	USBV+	RED	26	WST PS-125050B or EQUIV.	600±15mm
	2	USB0-	WHITE	26		
	3	USB0+	GREEN	26		
	4	USBV-	BLACK	26		
BATT	1	BATT+	YELLOW	16	JWT C401 WR0-10NPNL	***
	2	BATT+	YELLOW	16		
	3	BATT+	YELLOW	16		
	4	SMRD	BLUE	22		
	5	SMBC	WHITE	22		
	6	BATT-	BLACK	16		
	7	BATT-	BLACK	16		
	8	BATT-	BLACK	16		
	9	BAT Insert	ORANGE	22		
	10	B1	GRAY	22		
COM	1	AC_FAIL_T	OUTPUT	***	CVILLUX C15012SL000	***
	2	SHUTDOWN_T	OUTPUT	***		
	3	BATTERYLOW_T	OUTPUT	***		
	4	USB_VCC	INPUT	***		
	5	USB_D-	IO	***		
	6	USB_D+	IO	***		
	7	USB_GND	GND	***		
	8	GND	GND	***		
	9	PSGN_N	INPUT	***		
	10	POWERBUTTON_N	INPUT	***		
	11	BEEP	OUTPUT	***		
	12	PWRBTN_N	OUTPUT	***		



NOTE:  
ALL THE LENGTH OF OUTPUT WIRES EXCLUDE HOUSING.

UNIT:mm

MODEL NO. : FSP450-60MUA		TITLE: Outline		SHEET: 1 OF 1		REV:01	
R&D		CHECK		DRAWN		DATE	
		Brian_Lee		CF Yang		JUN.30.2015	
INTERIOR COUNTERSIGN:							