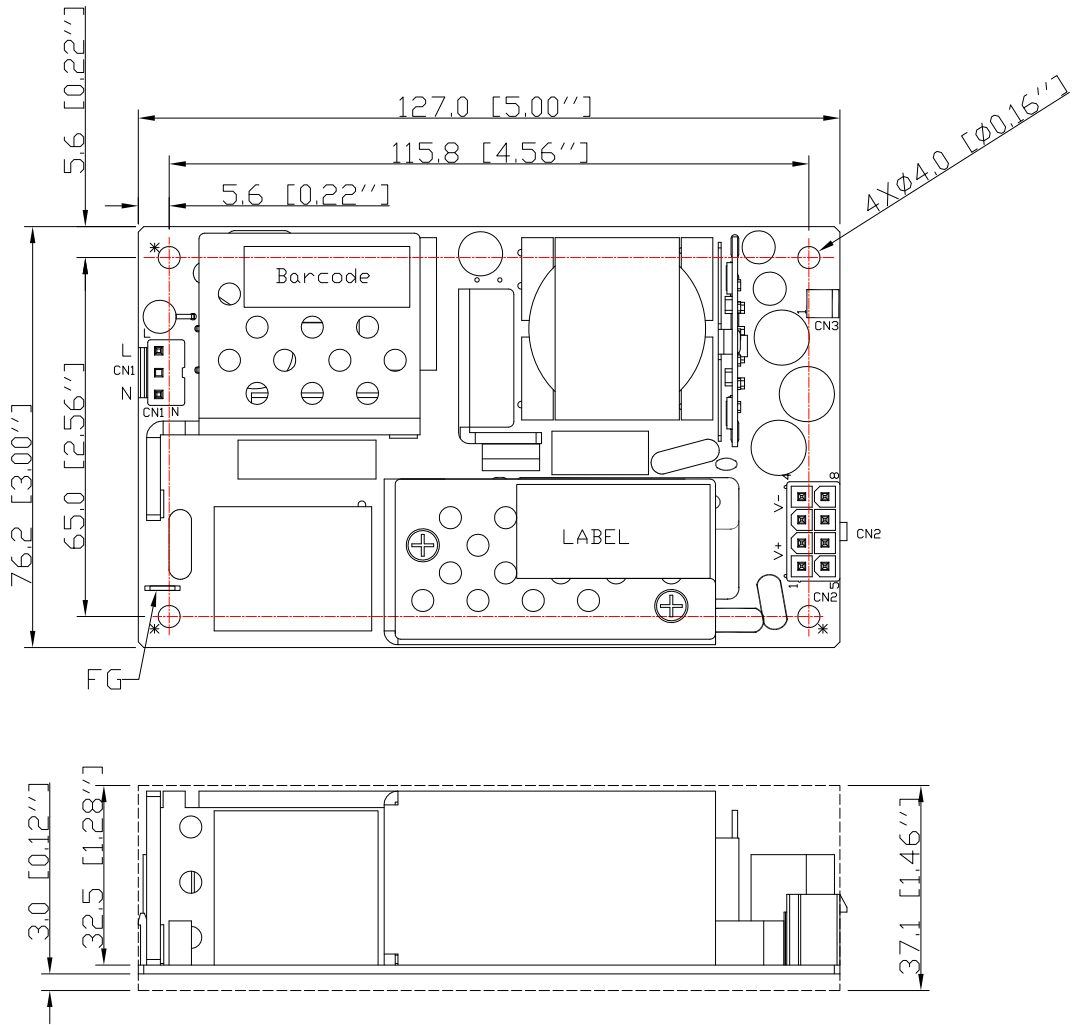


SCALE: 1:1  
UNIT:mm

版本	修改内容
2	增加备注5, 6
3	修改PIN定義



Notes:

1. Dimension (LxWxH): 127X76. 2X37. 1mm
2. AC input (CN1): JST B2P3-VH or EQU

PIN1	N
PIN2	NC
PIN3	L

3. DC output (CN2): JWT C4201WV0-2x4P or EQU

PIN1,2,5,6	Vout+
PIN3,4,7,8	Vout-

4. DC output (CN3): JWT A2001WV2-2P or EQU

PIN1	12V_fan driver
PIN2	GND

5. Ground tab is 6.35 x 0.8 mm (0.25" x 0.032") fast-on male terminal.
6. To ensure compliance with level B emissions, connect the three "\*" marked mounting holes with metallic standoffs to the chassis.

**P/N.: 90C4504200**

MODEL NO. :FSP450-H35-A24	OUTLINE	SHEET: 1 OF 1	REV:3
R&D(SH)	P E	DRAWN	DATE
		WEIW	20/DEC/24'